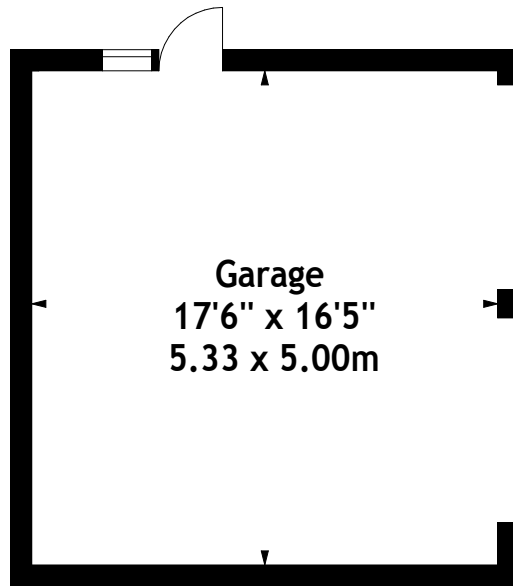
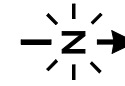


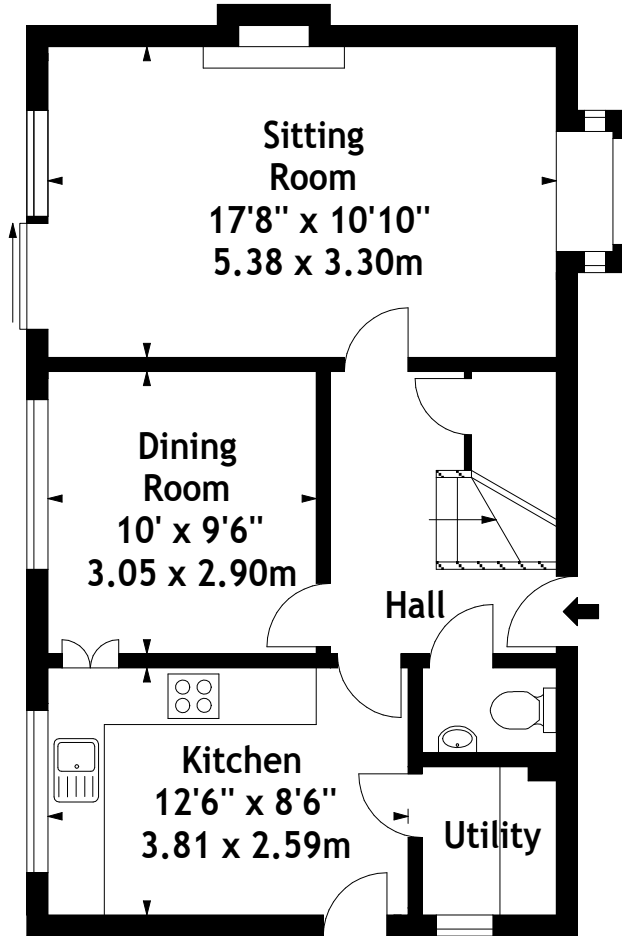
Wellmans Meadow,
Kingsclere,
Approx. Gross Internal Area
1118 Sq Ft - 103.86 Sq M

Garage
Approx. Gross Internal Area
289 Sq Ft - 26.85 Sq M



Garage
17'6" x 16'5"
5.33 x 5.00m

Ground Floor



Sitting Room
17'8" x 10'10"
5.38 x 3.30m

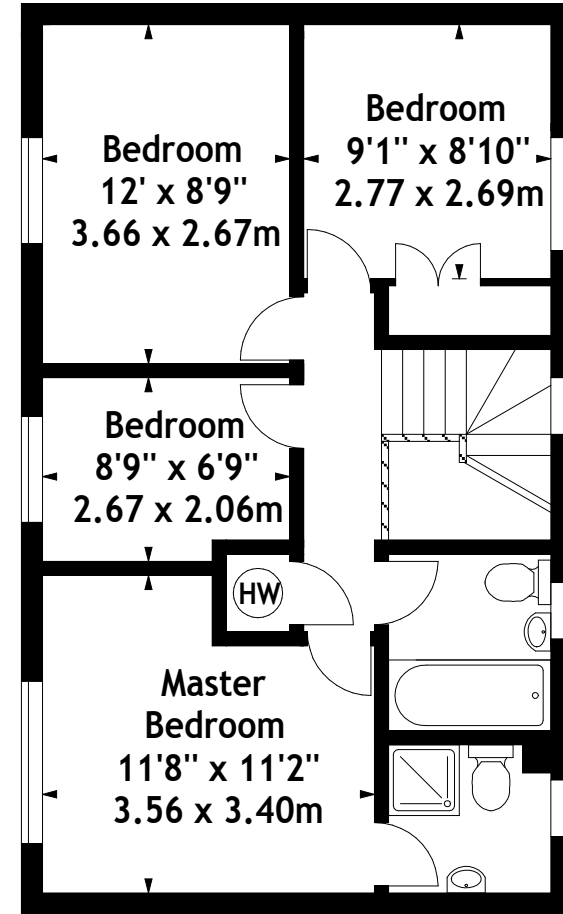
Dining Room
10' x 9'6"
3.05 x 2.90m

Kitchen
12'6" x 8'6"
3.81 x 2.59m

Utility

Hall

Ground Floor



Bedroom
12' x 8'9"
3.66 x 2.67m

Bedroom
9'1" x 8'10"
2.77 x 2.69m

Bedroom
8'9" x 6'9"
2.67 x 2.06m

Master Bedroom
11'8" x 11'2"
3.56 x 3.40m

HW

First Floor

Measured in accordance with RICS guidelines.
This floor plan is for illustrative purposes only and is not to scale.
Supplied Exclusively for Brunsdens in 2012
Photographs * Floorplans * EPCs
www.digihouse.net